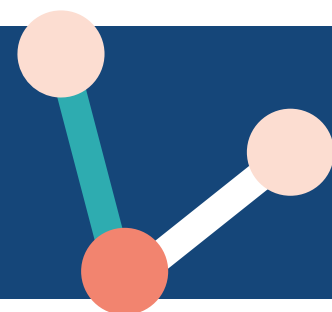


Table of Anticholinergic drugs and exposure risks

Adapted from Coupland et al (2019). Anticholinergic Drug Exposure and the Risk of Dementia. A Nested Case-Control Study. *JAMA Intern Med.* 2019;179(8):1084-1093. doi:10.1001/jamainternmed.2019.0677



Drug name and type
Antidepressants
Amitriptyline
Clomipramine
Dosulepin
Doxepin
Imipramine
Lofepramine
Nortriptyline
Paroxetine
Trimipramine
Antiepileptics
Carbamazepine
Oxcarbazepine
Antiparkinson agents
Benzotropine (Benzatropine)
Orphenadrine
Procyclidine
Trihexyphenidyl

Drug name and type
Antipsychotics
Chlorpromazine
Clozapine
Methotrimeprazine (levomepromazine)
Olanzapine
Pericyazine
Pimozide
Quetiapine
Trifluoperazine
Bladder antimuscarinics
Darifenacin
Fesoterodine
Flavoxate
Oxybutynin
Propiverine
Solifenacin
Tolterodine
Trospium