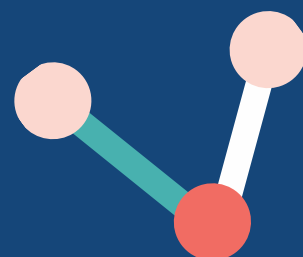


## East Midlands Dementia Care Research Symposium: Supporting Underserved Communities

*Programme – see reverse for continuation*

<b>09:30</b>	Registration open & display posters		
<b>09:45</b>	Welcome to the event	<a href="#">Martin Orrell</a>	Director and Professor, Institute of Mental Health, University of Nottingham
<b>09:55</b>	Research on hearing loss, associated noncommunicable disease and modifiable behaviours	<a href="#">David Maidment</a>	Senior Lecturer in Psychology, Loughborough University
<b>10:15</b>	Understanding outcomes for people with dementia who deliver or attend Recovery College dementia courses	<a href="#">Linda Birt</a>	LOROS Associate Professor Palliative Care and Frailty, University of Leicester
<b>10:35</b>	<u>Defin-YD, Lived experience of young onset dementia</u>	Peter Middleton	Patient and Public Involvement
		<a href="#">Jackie Parkes</a>	Professor in Applied Mental Health, University of Northampton
<b>10:55</b>	Short break		
<b>11:10</b>	The Cognitive Daisy (COG-D) for improving care for residents with dementia in care homes: A feasibility RCT	<a href="#">Petra Pollux</a>	Associate Professor, University of Lincoln
<b>11:30</b>	An Ugly Side to ‘the Beautiful Game’ – Athletic Labour, Family Caregivers and Neurodegeneration in Professional Football	<a href="#">Chris Matthews</a>	Senior Lecturer, Nottingham Trent University



*Continuation of programme*

<b>11:50</b>	Improving accessibility of training for carers and dementia in childhood	<a href="#">Chris Knifton</a>	Senior Lecturer in Dementia, Learning Disability and Mental Health, De Montfort University
<b>12:10</b>	Dementia Capacity Building / DemComm: Online Peer support for young onset dementia	<a href="#">Esther Loseto-Gerritzen</a>	NIHR ARC East Midlands, University of Nottingham
	Co-producing a dementia awareness training platform for African and Caribbean older adults	<a href="#">Orji McDermott</a>	
	Culturally appropriate digital dementia resources for South Asian community	<a href="#">Neil Chadborn</a>	
<b>12:30</b>	Buffet upstairs in restaurant & view posters		
<b>13:30</b>	<a href="#">Launch of Sustainable Prevention, Innovation and Involvement Network (SPIN-D)</a>	Georgina Charlesworth and Chris Fox	
<b>14:30</b>	Keynote - Working with underserved communities	<a href="#">Karan Jutla</a>	Reader in Dementia Care and Inclusion, University of Wolverhampton
<b>15:00</b>	Formal close		
<b>15:05</b>	Informal networking opportunities		

